



# ST1010FLP + ST200

## ◆ 自动袋盖机 + 4 边折烫机 ◆

Automatic Flap Machine + 4 sides creaser



采用缝科PLKG2516花样机头，配4 边折烫袋机，适用于中厚料产品的袋盖制作，一次成型，裁好的袋盖放入ST200 中进行四边折烫，然后放入袋盖机中自动车缝，无需进行传统的运缝，翻盖，修剪，熨烫，压面线各工序一次成型袋盖，适用于：牛仔面料，斜纹面料等等；

ST200 是四边折烫定型机，使用最新的发热管工作方式，无需接驳蒸汽，发热管温度数字可调，配备独立恒温器，由PLC控制循环时间，标准配置是双头工作站方式，一台烫袋机可同时供应两台袋盖机的工作。

With Sewtech PLKG2516 sewing head, plus special 4 sides creaser, it is high speed, robust and durable. Target to denim materials, twill pocket, applicable for jeans/pants pockets. 1 time to crease and finish the pocket flap, save from traditional method of run-stitch, trim and turn, iron, top-stitch.... Around 4 operators. Suitable for jeans, twill pants pocket setter.

ST200 folds and crease 4 sides of cutting pieces at the same time, adapting the new heating tube as heating element, so to achieve the fast and stable heating temperature, each heating element is 1.8KW. default setting is twin-head working method, so, 1 set ST200 can supply 2 sets flap machine at the same time.

## 技术参数(Tech & Parameters) :

### ST1010FLP:

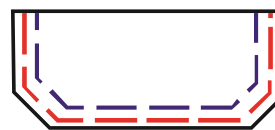
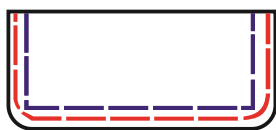
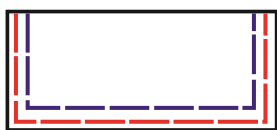
最大转数/Max speed : 2500 RPM;  
缝距/stitch length: 0.1-12.7mm;  
锁式线迹/Lock stitch  
断线感应/thread breakage detect  
车缝区域/Max pocket area : 250 x 160mm;  
花样数据储存量/Pattern quantity in memory: 999 + USB memory  
产品计数/work piece counter: 上/下计数/ up/down (0-9999)  
自动送料, 自动收料/Automatic feeding, automatic collecting  
用电/power & consumption: 220V 1P 50/60Hz, 1.25Kw (direct drive)  
用气/Air pressure: 5 Bar  
生产效率/Efficiency: 每分钟约6 个袋盖/ 6 flaps per minute

### ST200:

折烫温度/Creaser Temp: up to 250 度/Cel  
压烫宽度/crease width: 40-190mm  
压烫长度/crease length: 80-265mm  
标准更换模具时间/Standard change jigs time: 3-5 minutes  
平均产量/Average productivity: 400 pieces/hour  
用电/power & consumption: 220V 1P 50/60Hz, 2Kw

## 归类(Category) :

牛仔, 斜纹裤, 中厚料, 裤子, 袋盖工序;  
jeans, twill materials, mid-heavy materials, trousers, pocket flap operation;



## 选型/Model :

基本型 / Basic Model:  
ST1010FLP, 单针自动袋盖机

## 选型/Model :

ST200, 双头四边折烫机