

2019-2020年



纵横全局 专注品质



牛仔裤自动化生产设备
Jeans Automatic Equipments

针织用贴袋机
大口袋全自动贴袋机
*Automatic Pocket Letters
for knits and big pockets*

东莞市缝科自动化科技有限公司

地址：广东省东莞市常平镇常东路133号怡丰工业园

电话：+86 769—82982933

传真：+86 769—82523929

Email: carlos@sewtech.com.cn

缝科工程技术有限公司（总公司）

Comfort Engineering & Technology company limited (Head quarter)

电话：+ 852 97764968

Email: joanzhou@netvigator.com

网址：www.sewtechautomatic.com



Forever Jeans



If there is any outward can be lasted for ever, and never out of fashion, it must be jeans.

----- My friend/Mr. Shakespear

OK, we do jeans with automatic machinery.

----- Carlos/Sewtech Automation



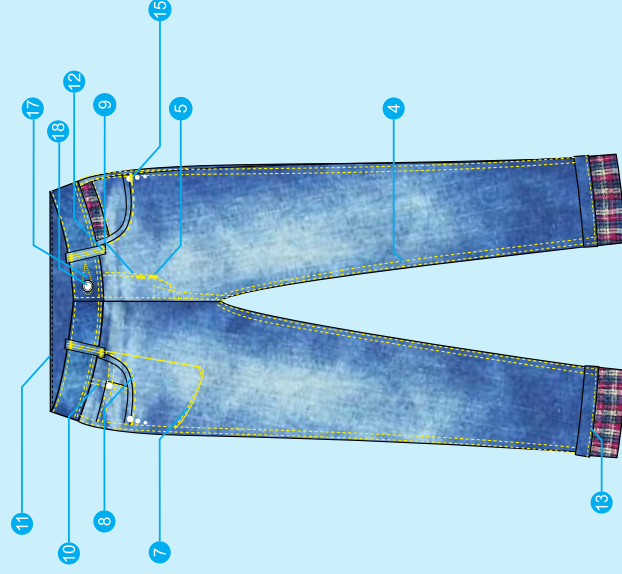
如果这世上竟然有我喜欢的衣物而且永不会落伍，那一定是我的牛仔褲。

----- 我的挚友/莎士比爾

是吗？那很可能是用我们的自动化设备制造的。

----- 郭康乐/缝科自动化科技

◆ 牛仔休闲裤自动化成套设备 ◆ AUTOMATION FOR JEANS PRODUCTION



① ST380
自动卷袋口机
Automatic Pocket Hemmer

② CM-G1010DH
多功能花樣包縫系列
Decorative Machine

③ STN3020B
全自动免穿幫機
Full Automatic Pocket Syster

④ ST-9588
高速多功能包縫机系列
Feed-off-the-arm Machine Series

⑤ CM-5214D
超高速雙頭包縫機系列
Direct Drive Super High Speed Overlock Sewing Machine Series

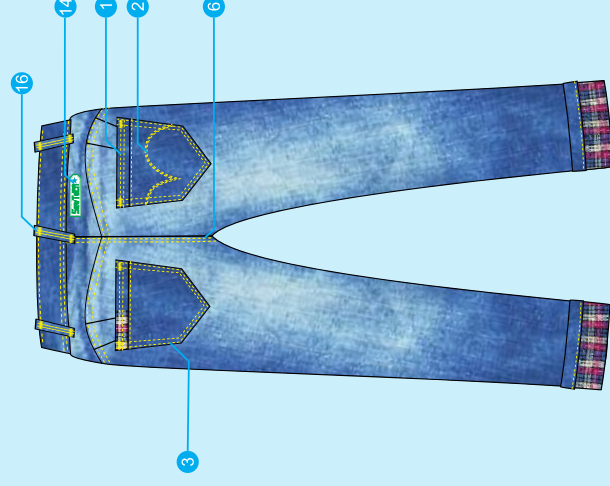
⑥ ST-35800
振夾机系列
Chainstitch Sewing Machine

⑦ CM-8842
袋衬机(併袋重車縫)
Pocket Lining Sewing Machine
(for trouser pocket)

⑧ CM-Z4
電腦平車
Computer Flat-sewing Machine

⑨ ST-1010V4F
多功能自动门襟机
J-Stitch Machine

◆ 牛仔休闲裤自动化成套设备 ◆ AUTOMATION FOR JEANS PRODUCTION



⑩ CM-8452Z
直落双针平缝机
Needle Down Double Needle
Lockstitch Sewing Machine

⑪ CM-1104PRD-TF
模式平缝缝制机
Chainstitch Sewing Machine for waistline

⑫ CM-2000C
双针平台型带刀推耳机
Double-Needle Flat sewing Machine With Front Cutter for Belt Loop

⑬ ST-63922
裤脚机
Lockstitch and Chainstitch Trouser-cuffing Machine

⑭ CM-E1010 CH
自动贴腰机
Multifunctional Automatic Pattern-attached Machine Series

⑮ CM-430D
直驱电脑平缝打结机
Electronic Direct Drive Lockstitch Knotting Machine

⑯ ST-254D
双针自动打帮机
Double-needle belt loop
attaching machine

⑰ CM-9820
电脑控制圆头缝眼机
Electronic Eyelet Button Hole Machine

⑱ CM-603
全自动送料机
Full Automatic Feeding Machine



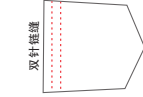
ST380

◆ 双针自动卷袋口机 ◆ Automatic Pocket Hemmer

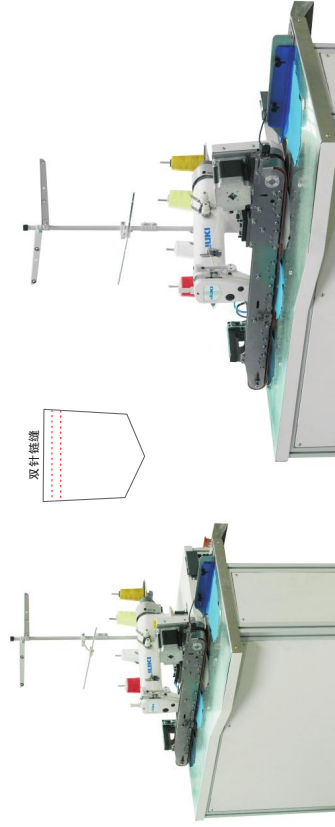
SCAN HERE TO SEE
OPERATION VIDEO



扫描二维码观看操作视频



双针缝迹



全新的气动送料系统，适用于中厚斜纹或牛仔面料的全自动卷袋口和缝制工序，配备可调密度的卷边拉筒。最新光电技术的电眼感应器，即使最白的浅色面料也能被敏锐地感应到，从而启动自动送料、自动车缝、自动剪线和自动收料。生产效率最高可达：每小时1200-1500个口袋。

Designed for jeans/twill casual pants hemming the pocket, automatic feeding, automatic stitching and collecting finished pieces. Normal working efficiency from 1200 pockets – 1500 pockets per hour. By Adopting the latest photocell technology, we can identify the very light color, even white fabric enters the feeding port, so to start automatically the feeding and sewing. Folding width is adjustable, suitable for non-skill operators.

技术参数(Tech & Parameters):

采用重机原装 MH380双针缝制机头，三菱 G 款伺服马达和控制箱，最高缝制速度可达 3600rpm;
Adopting Juki MH380 chainstitch machine head, Mitsubishi G type servo-motor and control box,
Max speed: 3600RPM;
标准针距(Standard needle gauge): 1/4" (6.4mm), 其他针距需订制
Standard needle gauge is 1/4" (6.4mm), for other specification, we must see the MH380 needle gauge for special made.
车缝长度(Stitch length): 0.9mm~4mm.
电压(Power): 220V 50/60Hz;
马达(Motor): 三菱 Mitsubishi XC-G554-20Y;
使用机针(Needle system): TV x 7 #14(#9 ~ #21)
压缩空气(compressed air): 5Bar
控制箱(control box): 三菱 Mitsubishi XC-GMIFY

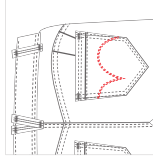
CM-G2210DH

◆ 后袋袋花机 ◆ Pocket Decorative Stitch Machine

SCAN HERE TO SEE
OPERATION VIDEO



扫描二维码观看操作视频



工艺：口袋花



采用缝料高速花样机头，车缝速度可达 2500RPM
车缝范围：220x100mm，足以涵盖欧美男裤口袋的袋花要求
配备清晰触屏，操作人员可以随时改变袋花花样并保存，系统可以保存999个花样
Sewtech high speed pattern sewing machine
Max sewing speed 2500RPM
Working area: 220x100mm
cover most of the back pocket decorative Equipped with touch screen, operator can easily make new pattern, stored in and call out for new order, storing capacity 999 patterns.

技术参数(Tech & Parameters):

缝距(Stitch length): 0.1-12.7mm
锁式线迹(Lock stitch)
花样数据储存量(Patterns Can Be Saved In Memory): 999 + USB as external save.
用电(Power & Consumption): 220V/1P 50/60Hz, 1.25KW (direct drive)
用气 (Air): 5Bar



STN3020B

◆ 全自动烫厚料贴袋机 ◆ Full Automatic Pocket Setter – heavy materials

SCAN HERE TO SEE
OPERATION VIDEO



扫描二维码观看操作视频



采用 Brother BAS-311 兄弟花样机头做缝切部分，全自动烫贴袋机，适用于中厚料产品的外贴袋，包括：牛仔面料，斜纹面料等等；标准配置已包含对条格面料功能，只需在折袋面盘选择对条对格功能即可；

定位吸风功能，吸风强度可根据面料的厚薄和弹性程度自行调节；
自动折料，自动送料，自动起缝，自动送料，自动断线感应，正常效率每分钟5-6个口袋（双线口袋）

With Brother BAS-311 sewing head, high speed, perfect finishing. Target to denim materials, twill pocket, applicable for jeans/pants pockets.

By selecting "check material mode", machine automatically change to check material mode.
Automatic folding, feeding, stitching, collecting and also break thread detect, normal efficiency is 5-6 pockets/1minute.
Vacuum positioning system, for different kind of materials, you can freely adjust the vacuum strength to hold the material.

全新电子化无级线张力设定，对于每段车缝线的张力可以分段设定，打造完美车缝线迹，现作为标准配置出厂。

Stepless electronic tension adjustment is now standard configuration, user can customize thread tensions for each single stitch to achieve the best stitching formations.

技术参数(Tech & Parameters) :

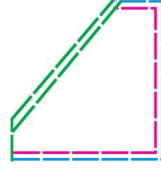
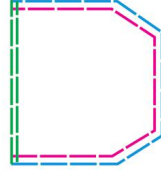
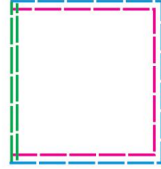
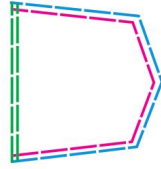
最大转数/Max speed : 3000 RPM
工作转数/recommend speed: 2500 RPM
缝距/stitch length: 0.1-12.7mm
锁式线迹/Lock stitch
断线感应/thread breakage detect
标准车缝区域/Pocket area : 250 x 250mm, 订制款范围/Special order: 270x270mm
最小车缝区域/min pocket size: 65x65mm(需要换外压框/optional parts needed)
花样数据存储量/Pattern quantity in memory: 999 + USB memory
产品计数/work piece counter: 上/下计数/ up/down (0-9999)
吸风定位/ Vacuum Positioning
对格对条功能/ Suitable for check materials

自动折料, 自动送料/Automatic folding, feeding, automatic collecting

用电/power & consumption: 220V 1P 50/60Hz, 1.25Kw (direct drive)
用气/Air pressure: 5 Bar (低压保护/Low air-pressure alert: 低于5 bar 报警/below bar)
生产效率/Efficiency: 每分钟约5-6个口袋/ 5-6 pockets per minute

归类(Category):

牛仔贴袋, 斜纹裤贴袋, 中厚料贴袋, 裤子贴袋, 全自动贴袋;
jeans pocket, twill materials pocket, mid-heavy materials, trousers pocket, fully automatic pocket setter;





ST3020D

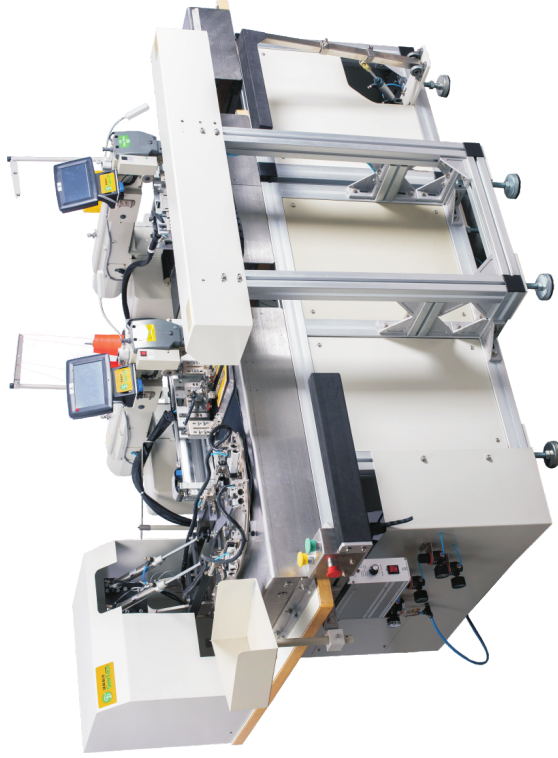
◆全自动免烫双针贴袋机◆

Double Color Pocket Setter

SCAN HERE TO SEE
OPERATION VIDEO



扫描二维码观看操作视频



采用缝科直驱系列3020机头，全自动免烫贴袋机，适用于中厚料产品的外贴袋，包括：牛仔面料，斜纹面料等等。

标准配置已包含对条格面料功能，只需在折袋面盘选择对条功能即可。

定位吸风功能，吸风强度可根据面料的厚薄和弹性程度自行调节。

自动折料，自动送料，自动起缝，自动断线感应，正常效率每分钟7-8个口袋（双线口袋）

With Sewtech direct drive 3020 sewing head, high speed, perfect finishing, Target to denim materials, twill pocket, applicable for jeans/pants pockets.

By selecting "check material mode", machine automatically change to check material mode.

Automatic folding, feeding, stitching, collecting and also break thread detect, normal efficiency is 7-8 pockets/minute.

Vacuum positioning system, for different kind of materials, you can freely adjust the vacuum strength to hold the material.

技术参数(Tech & Parameters) :

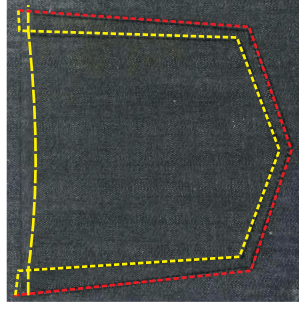
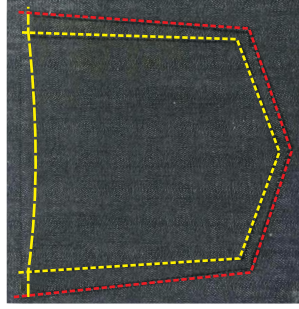
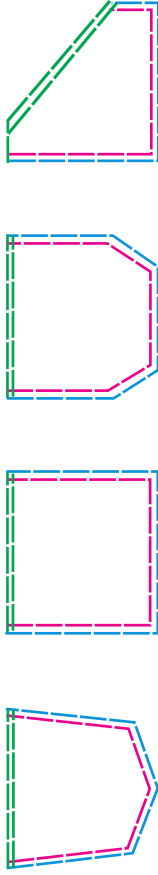
最大转数/Max speed:2800 RPM
工作转数/Recommend speed:2200-2400 RPM
缝距/Stitch length: 0.1-12.7mm
锁式线迹/Lock stitch
断线感应/Thread breakage detect
车缝区域/Max pocket area : 220x190mm
最小车缝区域/Min pocket size: 65x65mm(需要额外压框/optional parts needed)
花样数据储存量/Pattern quantity in memory: 999 + USB memory
产品计数/Work piece counter: 上/下计数/ up/down (0-9999)

自动送料, 自动收料/ Automatic feeding, automatic collecting

用电/power & consumption: 220V 1P 50/60Hz, 1.25Kw (direct drive)
用气/Air pressure: 5 Bar(低压保护/Low air-pressure alert: 低于5 bar 报警/below bar)
生产效率/Efficiency : 每分钟约7-8个口袋/ 7-8 pockets/minute

归类(Category) :

牛仔贴袋, 斜纹裤贴袋, 中厚料贴袋, 裤子贴袋, 全自动贴袋
jeans pocket, twill materials pocket, mid-heavy materials, trousers pocket, fully automatic pocket setter;





ST1010V4F

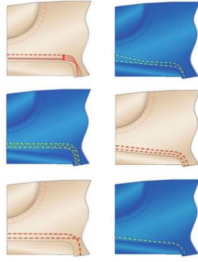
◆ 自动门襟机 ◆

Automatic J-stitch Machine

SCAN HERE TO SEE
OPERATION VIDEO



扫描二维码观看操作视频



采用缝料直驱系列PLKG2516R全旋梭花样机头，适用于牛仔面料，斜纹裤子的门襟J型线自动车缝工序，双倍大旋梭床
With Sewtech PLKG2516R direct drive rotary hook sewing head, it is high speed, robust and durable. Target to denim materials, twill materials, applicable for jeans/pants front fly J-stitch operation, double rotary hook.

技术参数(Tech & Parameters) :

最大转速/Max speed: 2800 RPM
锁式线迹/Lock stitch
车缝区域/Max pocket area: 250 x 160mm
花样数据储存量/Pattern quantity in memory: 999 + USB memory
产品计数/work piece counter: 上/下计数/ up/down (0-9999)

缝距/stitch length: 0.1-12.7mm

断线感应/thread breakage detect

自动送料, 自动收料/ Automatic feeding, automatic collecting

用电/power & consumption: 220V 1P 50/60Hz, 1.25Kw (direct drive)

用气/Air pressure: 5 Bar
生产效率/Efficiency: 每分钟约6-8 条裤子/ 6-8 J-stitch per minute

归类(Category) :

牛仔斜纹裤压门襟线, 中厚料, 裤子
jeans, twill materials J-stitching.

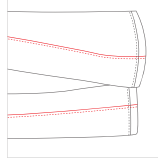
选型/Model:

基本型: ST1010V4F, 单针自动压门襟线机
Basic Model: ST1010V4F, Single Needle J-stitch machine

ST9588

◆ 高速埋夹机 ◆

Feed-Off-The-Arm Machine with integrated Puller



工艺: 合缝



自动抬压脚, 气动抬拖轮, 自动机针冷却, 自动剪线装置, 线头吸入式;
内置电子拖布轮, 轻松处理弹性面料;
上轴全自动供油

Pressure Foot Auto-lift, Automatic Puller lift, Needle air cooler,
Automatic thread trimming, thread hold by vacuum;
Automatic Belt Puller, suitable for even elastic materials;
Automatic lubricating upper shaft.

技术参数(Tech & Parameters):

链式线迹/Double Chain stitch

最高缝速/Max Speed/ 4300RPM

缝距Stitch Length/2.6-4.8mm

机针和针距 Needle/2 or 3 needles needle gauge: 6.4mm

马达电控 Motor and Control Box/Hoshing Full Function Control and Servo Motor



ST-35800

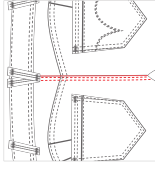
◆ 高速埋夹机 ◆

Feed-Off- The-Arm Reverse Lap Machine with integrated Puller

SCAN HERE TO SEE
OPERATION VIDEO



扫描二维码观看操作视频



工艺：指缝缝制



自动抬压脚，气动抬拖轮；
内置电子拖布轮和下差动送料，轻松处理多层面料；
上轴全自动供油；
Pressure Foot Auto-lift, Automatic Puller lift;
Automatic Belt Puller with differential feed, suitable for multi-layer materials;
Automatic lubricating upper shaft.

技术参数(Tech & Parameters):

链式线迹/Double Chain stitch
最高缝速Max Speed/ 4300RPM
缝距Stitch Length/2.6-4.8mm
机针和标准针距 Needle/2 or 3 needles, Standard needle gauge: 6.4mm
马达电控 Motor and Control Box/Hoshing Full Function Control and Servo Motor

ST-63922

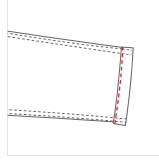
◆ 辘脚机 ◆

Bottom Hemming Machine

SCAN HERE TO SEE
OPERATION VIDEO



扫描二维码观看操作视频



工艺：裤脚卷边



自动抬压脚，气动抬拖轮，自动机针冷却，自动剪线装置，线头吸入式；
内置电子拖布轮，轻松处理弹性面料；
上轴全自动供油
Pressure Foot Auto-lift, Automatic thread trimmer, standard and reverse folder, automatic fold hem margin;
Upper + lower Belt Puller with needle feed, suitable also for elastic materials;
Automatic dense stitch(for chain stitch type)
Conversion kit to easily change from lock stitch to chain stitch, or vice versa.

技术参数(Tech & Parameters):

技术参数 (Tech & Parameters)
线迹(Double Chain stitch)
最高缝速Max Speed:4000RPM for chainstitch, 3500RPM for lock stitch
缝距Stitch Length:2-8mm
机针和标准针距 Needle:2 or 3 needles, Standard needle gauge: 6.4mm
马达电控 Motor and Control Box:Hoshing Full Function Control and Servo Motor



ST-254D

◆ 双针自动裤耳机 ◆ Automatic Belt Loop Setter

SCAN HERE TO SEE
OPERATION VIDEO



扫描二维码观看操作视频



- 切料头特点Cutting mode :
 - 三角斜切 Triangle cutting
 - 平切 Flat cutting

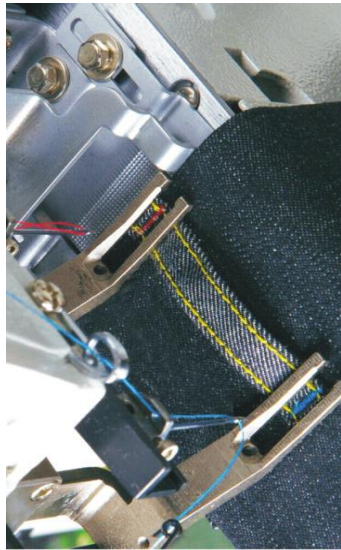
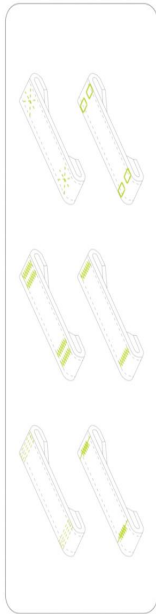
采用缝料直驱系列双针机头，自动拉裤耳，量长度，自动剪，折裤耳，再自动两端打套结，一次性完成裤耳的缝制工作。适用于牛仔，休闲裤的订裤耳工序。

系统自动识别接驳裤耳，并将接驳裤耳自动剔除；

With Sewtech direct drive sewing head, it is high speed, robust and durable. Target to jeans, twill woven materials. Automatic cut and fold belt loop, twin needle adjustable for the length, width, finish belt loop 2 bar tacks at same time.

System automatically identify failed belt loop, feed into dust bag, only good belt loops will be tacked.

预设的裤耳结型/preset belt loop patterns



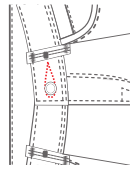
型号Model	ST-254D
最高缝纫速度Highest sewing speed	2,700rpm (缝制间距3.4mm)/Below2700rpm (Sewing space of 3.4mm)
旋梭Hook	垂直半回转旋梭 油芯注油/Vertical hook of semi-rotary,oil feeded by oil-wick
机针Needle	DP*17#19#-#21
线规格范围 Thread No.	棉线#30-#50细纱线#30-#50/Cotton #30-#50 Spinning line
更换针线Number of stitches	操作盘选择方式/Operation panel option
加固缝图案记忆量 Reinforce the sewing pattern memory	标准容量9个图案/Standard size 9 designs
线迹调整方式 Adjustment of stitch	操作盘输入方式/Operation panel input mode
加固缝宽度Reinforced seam width	1.0mm-3.5mm
加固缝长度Reinforced seam length	5.0mm-22.0mm
压脚上身量Press foot rise in quantify	21mm(从针板平面到压脚底面)/21mm(From needle plate to presser foot)
送布方式Cloth feeding mode	连续送布 (脉冲马达驱动方式) /Continuous feed(Pulse motor drive mode)
缝纫机驱动方式Sewing machine drive mode	缝纫机DD,AC伺服马达 (550W)/Sewing machine DD,ACservo motor(550w)
针间距调整方式 Needle distance adjustment method	针部手动调整方式/Manual operation 旋梭脉冲马达驱动方式 (0.01mm单位) /Rotary hook pulse motor driving model
裤带宽度Belt width	7-20mm
加固缝裤带长度Reinforce sew the belt length	45-75mm
重量Weight	245kg
电源Power	AC220V
气压Air pressure	0.5Mpa 1.8L/min



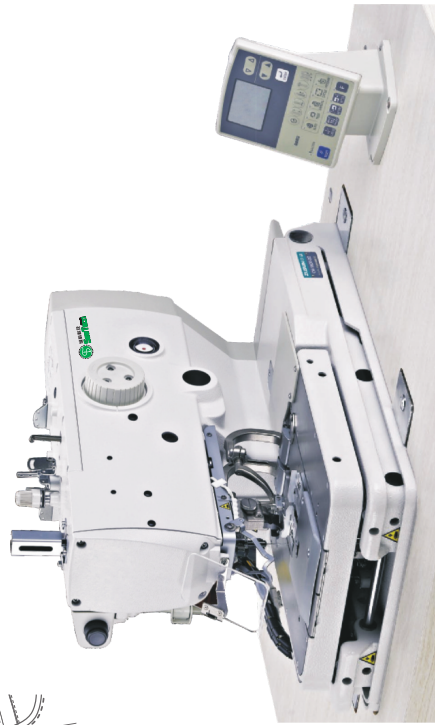
ST-9820

◆ 电脑控制圆头锁眼机 ◆

Electronic Eyelet Button Holer Machine



※工艺：锁眼



SCAN HERE TO SEE
OPERATION VIDEO



扫描二维码观看操作视频

产品特点

- 二、最高速度：达2500针/分钟，比起常规机械款式大大提高生产效率；
- 三、操作空间：120mm深的大机腔，充足的缝纫空间；
- 四、款式：电控进口电机，原装零件，SMC进口气缸电磁阀
- 五、花样变化：通过操作面板，多种花样、花型可以选择（包括菊花眼）
- 1、Max speed: 2500rpm, greatly improving the production efficiency compared with ordinary machine.
- 2、Operating space: 120mm big deep machine enough sewing space.
- 3、Style: commonly used control box, SHINANO motor, original parts; imported SMC cylinder solenoid valve
- 4、Design: Many kinds of designs can be chosen through the operation panel. (include round button hole)

用途

适用于：牛仔、西服、外衣、工作服、休闲裤等
It is suitable for jeans, suits, coat, worker uniforms, casual pants
Medium materials with various button holes

类别

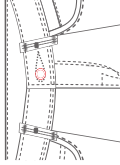
ST-9820-00: 带有切面线
ST-9820-01: 带有低面线
ST-9820-02: 带切底线尾线较短

MODEL	ST-9820-00	ST-9820-01	ST-9820-02
Stream thread cutting device	Long thread cutting	Long thread cutting	Short thread cutting
Bottom thread cutting device	None	Long thread cutting	Short thread cutting

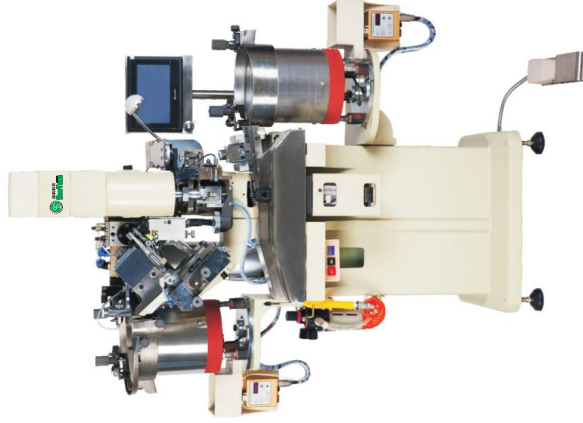
ST-603

◆ 全自动送料机 ◆

Full Automatic Feeding Machine



※工艺：金属扣、铆钉



SCAN HERE TO SEE
OPERATION VIDEO



扫描二维码观看操作视频

产品特点

- 1、高效率:普通的3-6倍正常送料每分钟150次。
- 2、安全性:冲头安全保护装置，更有效保护操作者手指安全。
- 3、精度:送料精度气动安全（99.9%），排除人工扣不合格。
- 4、节能环保:气动工作原理，低能耗待机时自动断电模式。
- 5、方便:PLC界面简单易懂，按键后快速反馈。
- 6、适用:于84.5-182.0各种圆形金属纽扣，并部分方形扣适用。
- 7、计算:机可以进行生产统计。
- 8、红外线:对扣中心位置精确定位。

Function Characteristic:

- 1. High efficiency: it is 3-6 times than the normal feeding rate, 150times per minute.
- 2. Safety: safety protection device for effectively protecting operator's finger.
- 3. Less reduction: even pneumatic stacking (qualified 99.9%) manual feeding, unqualified
- 4. Energy saving: pneumatic working principle automatic power off mode for low-energy-standby.
- 5. Convenience: (PLC) simple interface, easy to learn shortcut buttons.
- 6. Suitable for: 84.5-182.0 various round metal buttons, some of the square buttons.
- 7. Calculator: production statistics can be carried out.
- 8. Infrared ray: accurate targeting and positioning of the center of the button.

用途

牛仔、休闲裤、箱包、皮具、鞋类、工艺装饰品等。

Usage:

Jeans, casual pants, bags, leather goods, footwear, craft decorations, etc

规格

电压: 220伏 50/60HZ输出扭矩大。
加工厚度: 0.3-8毫米
功率: 200瓦
外形尺寸: 115x58x145cm
气压: 3-8Mpa
重量: 215公斤

Specifications:

Voltage: 220 v 50/60hz high output torque.
Machining thickness: 0.3-8mm
Power: 220W
Dimensions: 115x58x145cm
Pneumatic: 3-8mpa
Weight: 215kg



STN8000A

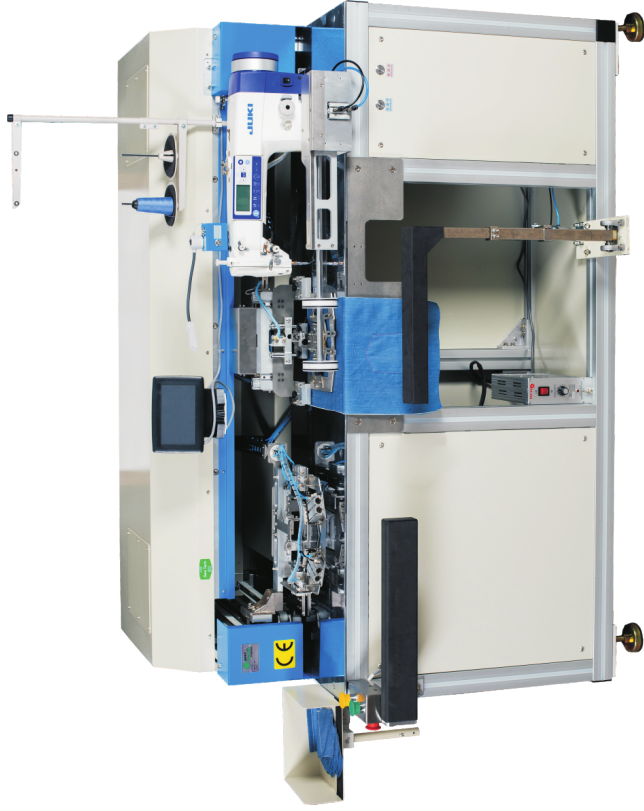
◆ 全自动免烫薄料贴袋机 ◆

Full Automatic Pocket Setter – light/knits materials

SCAN HERE TO SEE
OPERATION VIDEO



扫描二维码观看操作视频



采用重机 DDL-8000A 机头改装的全自动免烫贴袋机，适用于薄料产品的外贴袋工序，包括：针织面料，休闲衬衫面料，泳装面料，斜纹面料等；出厂标准配置已包含：对条对格功能；放置侧标功能；无极可调吸风定位功能；自动折边，自动送料，自动收料，自动起缝，自动收料，自动断线感应等功能；正常工作效率为每分钟5-6个口袋。

在更换相应的模具后，机器可自动车缝T-shirt后半月贴，或者自动车缝T-shirt门襟。

By adopting Juki DDL-8000A machine head this model is most suitable for full Automatic Pocket Setting of light materials, including: Knits materials, casual shirt, swimming suits, twill materials. Standard configuration includes: matching strip materials, put side labels, stepless vacuum holding panel for positioning, automatic folding, automatic feeding, automatic sewing, automatic detect of thread breakage, and automatic stack of finished pieces. Normal efficiency is 5-6 pockets per minute.

After change the jigs, the machine can work as T-shirt back half moon, or T-shirt Placket automate.

技术参数(Tech & Parameters):

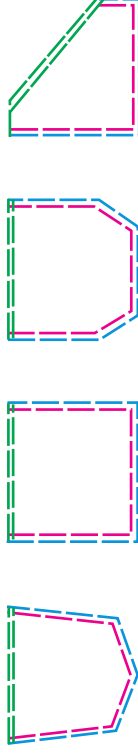
最大转速/Max speed: 3200 RPM
正常工作速度/Recommend speed: 2600-2800 RPM
缝距/stitch length: 0.1-12.7mm
锁式线迹/Lock stitch
断线感应/thread breakage detect
车缝区域/Max pocket area: 250 x 250mm, 订制款范围/Special order: 270x270mm
最小车缝区域/min pocket size: 65x65mm(需要换外压框/optional parts needed)
花样数据储存量/Pattern quantity in memory: 999 + USB memory
产品计数/work piece counter: 上/下计数/ up/down (0-9999)

自动折料, 自动送料, 自动收料/ Automatic folding, feeding, collecting

用电/power & consumption: 220V 1P 50/60Hz 1.25Kw (direct drive)
用气/Air pressure: 5 Bar (低压保护/Low air-pressure alert: 低于5 bar 报警/below bar)
生产效率/Efficiency: 每分钟约 6个口袋/ 6 pockets per minute

归类(Category):

针织贴袋, 衬衫贴袋, 薄料贴袋, 上衣贴袋, 裤子贴袋, 全自动贴袋;
Knits pocket, shirt pocket, light materials, jacket pocket, trousers pocket, fully automatic pocket setter;





ST4025A

袋鼠袋自动贴袋机

Sweater Front Pocket Setter

SCAN HERE TO SEE
OPERATION VIDEO



扫描二维码观看操作视频



采用缝料重工业系列 4025 机头，全自动免烫贴袋机，适用于中厚料产品的外贴袋，专用于针织卫衣的前袋鼠袋制做以及针织后背贴工艺；
标准配置已包含对条格面料功能，只需在开袋面选择对条功能即可；
定位吸风功能，吸风强度可根据面料的厚薄和弹性程度自行调节；
自动折料，自动起缝，自动收料，自动断线感应，正常效率每分钟 3-4 个口袋(双线口袋)

With Sewtech direct drive 4025 sewing head, high speed, perfect finishing. Designed for sweater front pocket setting and knits back patch.
By selecting "check material mode", machine automatically change to check material mode.
Automatic folding, feeding, stitching, collecting and also break thread detect, normal efficiency is 3-4 pockets/minute.
Vacuum positioning system, for different kind of materials, you can freely adjust the vacuum strength to hold the material.

技术参数(Tech & Parameters):

最大转数/Max speed: 2800 RPM
工作转数/Recommend speed: 2200-2400 RPM
缝距/stitch length: 0.1-12.7mm
锁式线迹/Lock stitch 断线感应/thread breakage detect
车缝区域/Max pocket area: 400 x 250mm
最小车缝区域/min pocket size: 65x65mm(需要换外压框/optional parts needed)
花样数据储存量/Pattern quantity in memory: 999 + USB memory
产品计数/work piece counter: 上/下计数/ up/down (0-9999)

自动折料，自动送料，自动收料/ Automatic folding, feeding, collecting

用电/power & consumption: 220V 1P 50/60Hz 2.5Kw (direct drive)
用气/Air pressure: 5 Bar (低压保护/Low air-pressure alert: 低于 5 bar 报警/below bar)
生产效率/Efficiency: 每分钟约 3-4 个口袋/ 3-4 pockets per minute

归类(Category):

针织贴袋，斜纹裤贴袋，中厚料贴袋，裤子贴袋，全自动贴袋；

Knits pocket, twill materials pocket, mid-heavy materials, trousers pocket, fully automatic pocket setter;

